

# THE BRIDGE EASTON SEND SCHOOL

Public Presentation

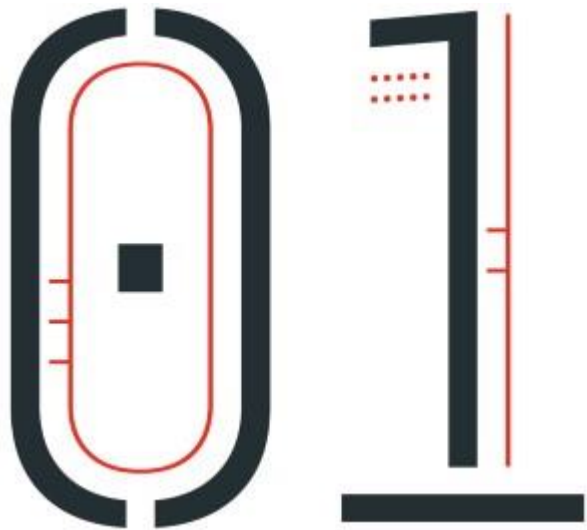
Monday 23 November 2020



# AGENDA

---

- 1.0 AN INTRODUCTION TO THE TEAM
- 2.0 BACKGROUND
- 3.0 THE SITE
- 4.0 OUR PLANS
- 5.0 PROGRAMME
- 6.0 Q&A



AN INTRODUCTION TO THE TEAM

---

- NCC made an application to the DfE for a new special school as part of the free school programme in October 2018, based on demonstrable need for places
- The building of the road to the school is part of Norfolk's school capital programme
- NCC will remain as landlord and the school land will be leased to the school operator (Trust) under a 125 year lease
- All new schools are academies but NCC, as Education Authority, will be responsible for admissions to the school and school transport.

- The DfE have approved the funding for the construction of this school following an application made by Norfolk County Council
- Opening this school is all about recognising the **need** for school places, of this type, in this area
- It will become one of 35 new SEND school (nationwide) that were announced by the Education Secretary earlier this summer – and one of four expected to open in the East of England
- The Bridge London Trust have been successful in winning the tenure of this school
- We are pleased to have appointed Portakabin Ltd to take forward construction – if our planning application succeeds.

- School will be operated by The Bridge London Trust on direct appointment from the Department for Education following competitive tender process
- The Trust currently runs four schools – three special schools and one mainstream primary school
- Two schools already inspected and rated Outstanding by Ofsted
- Trust has worked collaboratively with the Project Team at the design stage to ensure that the school will work in the best possible way internally/externally for pupils with special needs
- Excited to be on board and looking forward to joining the local community
- Keen to work closely with the local community and share facilities out of school hours.

# PORTAKABIN

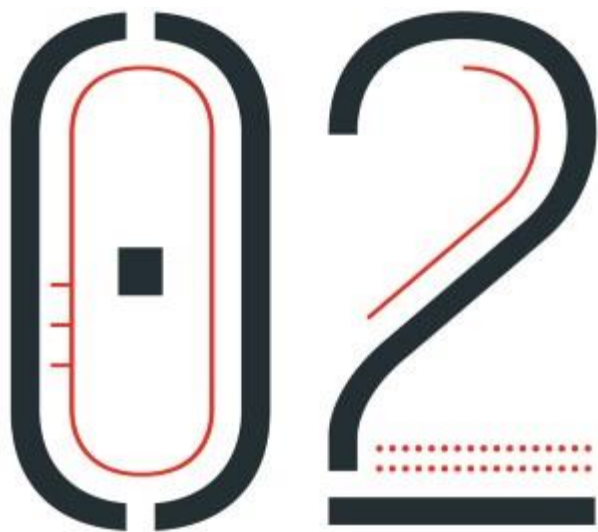
---

- Whether you need simple stand-alone cabins, complex architectural designs with custom-made interior fittings, or something in between, Portakabin solutions can be used for any application and installed on any site, no matter how challenging
- Part of the Shepherd Group for almost 60 years, we've innovated, developed and delivered exceptional buildings, opening up possibilities for a huge variety of organisations, large and small
- We've done it with unrivalled on time, on budget performance across the UK and Europe, delivering 99.7% on time and on budget. That's in sharp contrast to the construction industry as a whole which only achieves average of just 63% and 66% on budget respectively
- With more than 1,750 employees operating from around 100 sites, Portakabin offers a wide range of modular and portable building solutions to meet the needs of an increasingly diverse customer base
- Portakabin has considerable experience acting for DfE on school developments around the country.





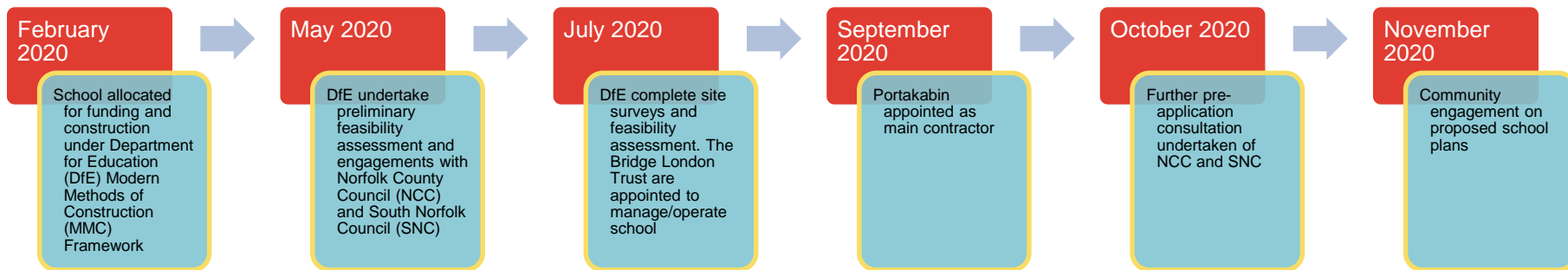




BACKGROUND


# BACKGROUND

---





THE SITE



ST PETERS C OF E  
PRIMARY SCHOOL

PERSIMMON HOUSING  
DEVELOPMENT

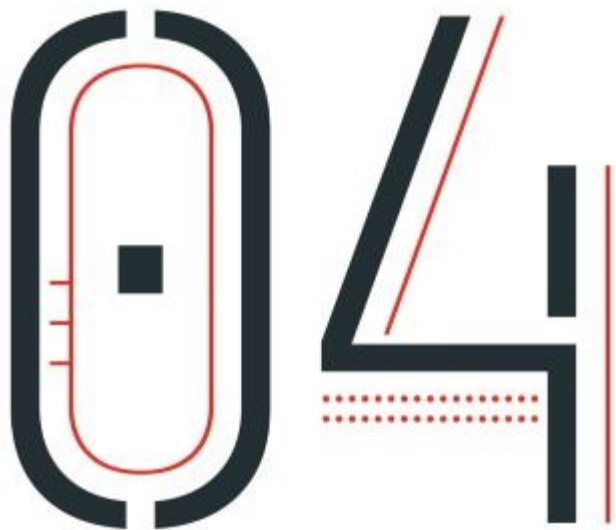
NORFOLK SEN  
SCHOOL SITE  
AND  
ASSOCIATED  
ROAD WORKS

NORWICH FAMILY  
GOLF CENTRE

EASTON  
GYMNASTICS  
CLUB

HALL ROAD

BAWBURGH ROAD



OUR PLANS



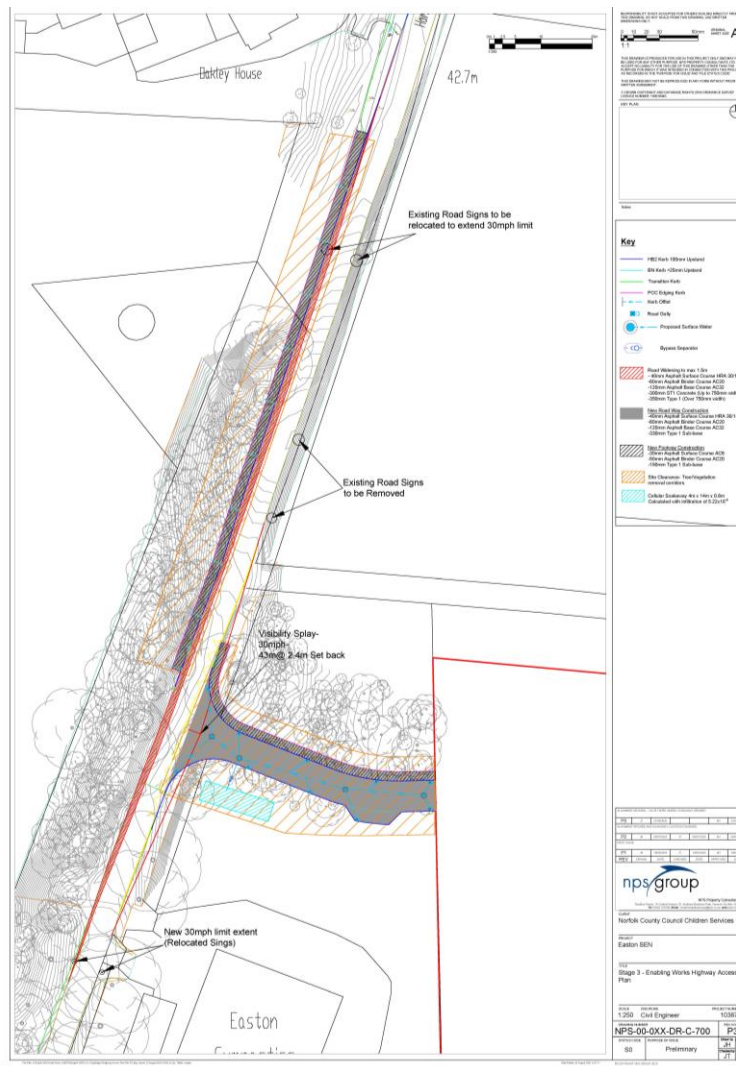
# DESIGN PRINCIPLES

---

A comprehensive site of design principles has been adopted as follows:

- A design where the building and landscape meets the specific needs of pupils with a primary need of cognition and learning
- A design that creates a safe and calm environment to enhance educational experience and attainment
- A design that respects the environmental context and setting of the site
- A design that provides a quality learning environment both internally and externally of the school building
- A design that is both flexible and inclusive incorporating a mix of hard and soft social spaces with shared and breakout space
- A design that encapsulates a desire to teach life skills to support independence and life progression
- A design that is exemplary and enduring and responsive to context.





# OUR PLANS

---





# OUR PLANS

---





# OUR PLANS

---



05

PROGRAMME

# PROGRAMME

---

- 7 December 2020 Meeting with Easton Parish Council
- 7 December 2020 Webinar Feedback Deadline
- 17 December 2020 Planning Application Submission
- January 2021 Statutory (Neighbourhood) Consultation Period
- 18 March 2021 Target Planning Application Determination Date
- May - October 2021 Highway Enabling Works Construction Phase
- November 2021 - October 2022 School Construction Phase
- January 2023 School Opening

Q & A

## FEEDBACK

---

[www.surveymonkey.co.uk/r/thebridgeeaston](https://www.surveymonkey.co.uk/r/thebridgeeaston)